



TERRA CREA

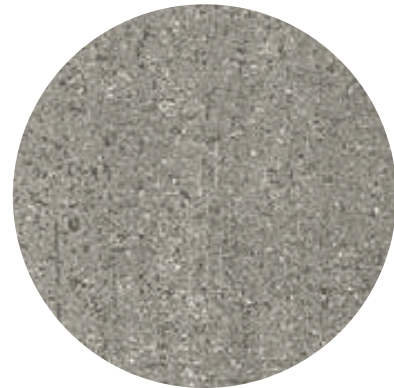
Down through the millenia, clay has been the chosen medium for amazing handmade creations. The study of this fascinating material has led us to Terra Crea, a sensory project that is vital, textural and highly engaging.



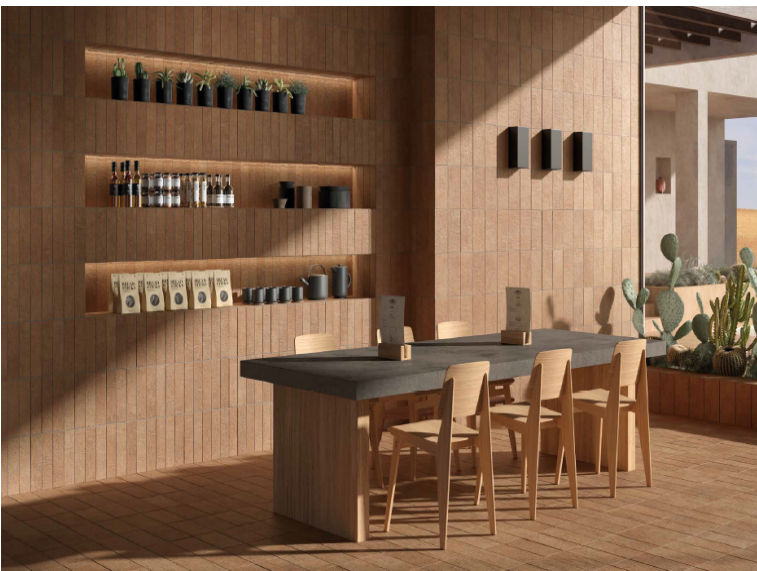
calce



corda



limo



pomice



mattone

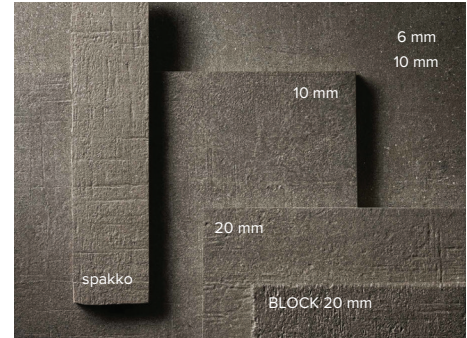
TERRA CREA

Texture #1



6 mm
NATURALE
48"x112"

10 mm
NATURALE
48"x48"



Texture #2



10 mm
NATURALE
32"x72"
32"x32"
24"x48"
24"x24"

RUDE R11C
32"x72"
32"x32"
24"x48"
24"x24"



MOSAIC
12"x12"
tessera - 3"x3"



MOSAIC
8"x12"
tessera - 4"x8"



MOSAIC
12"x12"
tessera - 2"x2"



1.81"x24"
BULLNOSE

Texture #3

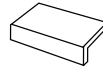


10 mm **SPAKKO®**

4"x24"
12"x12"
6"x12"
6"x6"
3"x12"
3"x6"



3"x12"
3"x6"
ELLE "7.5"



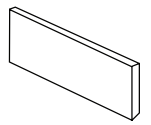
6"x12"
12"x3"
ELLE "30"

20 mm
SKE 2.0

32"x32"
24"x48"
24"x24"

20 mm
BLOCK 2.0

8"x8"
8"x12"



12"x24"
BULLNOSE 2.0
MAXI BEVEL

TERRA CREA	Thickness (mm)
48"x112"	6
48"x48"	10
32"x72"	10
32"x32"	10
24"x48"	10
24"x24"	10
SPAKKO - 4"x24"	10
SPAKKO - 12"x12"	10
SPAKKO - 6"x12"	10
SPAKKO - 3"x12"	10
SPAKKO - 3"x6"	10
SPAKKO - 6"x6"	10
ELLE "7,5" - 3"x12" / 3"x6"	10
ELLE "30" - 6"x12" / 12"x3"	10
12"x12" Mosaico - 3"x3"	10
8"x12" Mosaico - 14"x8"	10
12"x12" Mosaico - 2"x 2"	10
SKE 2.0 32"x32"	20
SKE 2.0 24"x48"	20
SKE 2.0 24"x24"	20
BLOCK 2.0 8"x8"	20
BLOCK 2.0 8"x12"	20

CHARACTERISTICS OR PROPERTIES	STANDARDS	COMPLIANCE WITH STANDARDS	COMPLIANCE WITH STANDARDS				
			NATURALE 6MM	NATURALE 10MM	RUDE 10MM	SPAKKO® 10MM	SKE2.0 20MM
FLATNESS		± 0,5 % ± 2,0 mm	± 0,2%	± 0,35%	± 0,35%	± 0,35%	± 0,35%
LENGTH AND WIDTH		± 0,6 % ± 2,0 mm	± 0,15%	± 0,15%	± 0,15%	± 0,15%	± 0,15%
THERMAL SHOCK RESISTANCE	ISO 10545-9	PASS ACCORDING EN ISO 10545-1	NO DAMAGE				
FROST RESISTANCE	ISO 10545-12	PASS ACCORDING EN ISO 10545-1	NO DAMAGE				
SLIP RESISTANCE			NATURALE 6MM	NATURALE 10MM	RUDE 10MM	SPAKKO® 10MM	SKE2.0 20MM
DYNAMIC COEFFICIENT OF FRICTION	B.C.R. C.A. B.C.R. G.B D. M. 236 DEL 4.6 1989	> 0,40	CONF	CONF	CONF	CONF	CONF
	BS-7976 PENDULUM TEST	-	> 36 WET	> 36 WET	> 36 WET	> 36 WET	> 36 WET
	ANSI A137.1 BOT 3000	Wet DCOF > 0,42	CONF	CONF	CONF	CONF	CONF
	DIN 51130	-	R10	R10	R11	R10	R11
	DIN 51097	-	A+B	A+B	A+B+C	A+B	A+B+C
	ENV 12633	≥ CL 1	CONF	CONF	CONF	CONF	CONF
	UNI EN 13036 - 4 2011	≥ 36	CONF	CONF	CONF	CONF	CONF

LOS ANGELES