



PRIMA MATERIA

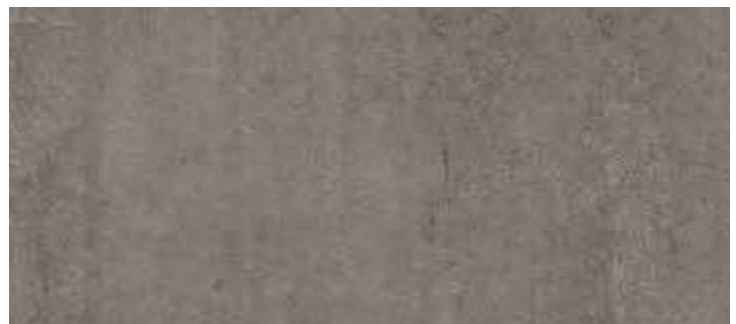
Prima Materia develops the material suggestions of the concrete surfaces for differentiated and creative solutions for indoor and outdoor, public and residential areas.



Cemento



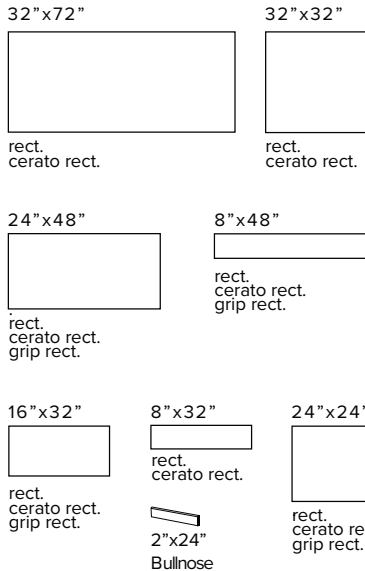
Cenere



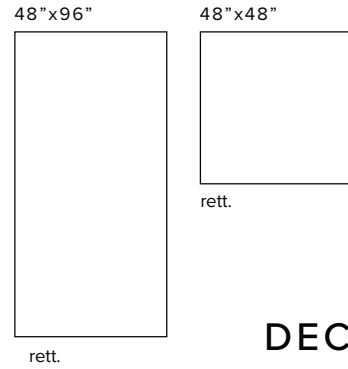
Sandalo

PRIMA MATERIA

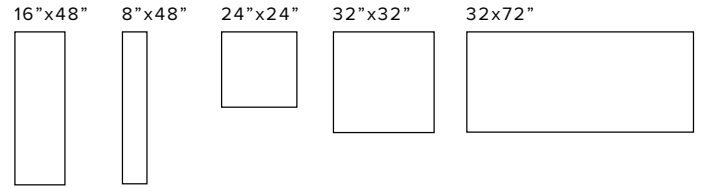
THICKNESS 10 mm



MAXI THICKNESS 6 mm

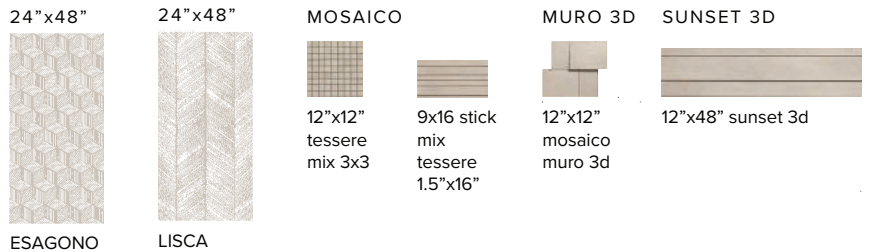


SKE 2.0



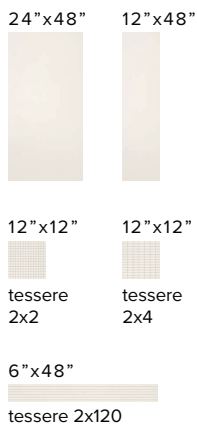
THICKNESS 20 MM

DECORS

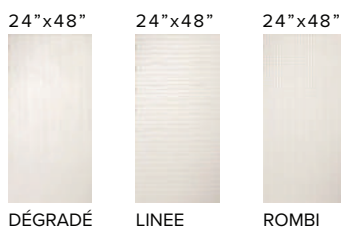


TALCO

THICKNESS 10 mm



MAXI THICKNESS 6 mm



STANDARDS	CHARACTERISTICS OR PROPERTIES	COMPLIANCE WITH STANDARDS	
ISO 10545-2	Thickness	10 mm	Complies with standard
	Length and width	+/- 0,5 %	Complies with standard
ISO 10545-4	Bending strength	-	53 N/mm ²
ISO 10545-9	Thermal shock resistance	Requested	Complies with standard
ISO 10545-12	Frost resistance	Requested	Complies with standard
ISO 10545-13	Chemical resistance	-	UA ULA UHA
DIN 51130	Slip resistance	-	R10 naturale R11 grip
DIN 51097	Slip resistance	-	A naturale C grip
B.C.R.A. C.A. B.C.R.A. G.B. D.M. 236 del 4.6.1989	Slip resistance	Tortus Test	60 DRY / 40 WET cenere - cemento natural 58 DRY / 30 WET sandalo natural 66 DRY / 60 WET grip
ASTM C 1028/07	Slip resistance	-	0,88 DRY / 0,66 WET natural 0,76 DRY / 0,62 WET grip

LOS ANGELES